



Pub.Date January 2011
Topic Labour Market
Coverage Powys & Planning
Areas
Reference B_UBC_1112-01-
10129-2011-en

CONTENTS

Introduction	1
Key Points	1
Reference Notes	2
Graph 1	3
JSA Claimant Count, Powys; Five Year Trends	
Graph 2-16	4-8
JSA Claimant Rates; Planning Areas, Five Year Trends	
Table 1	9
JSA Claimants by Gender; Counts and Rates, Planning Areas, Shires, Powys, and Wales	
Table 2	10
Long Term and Youth JSA Claimants Counts, Planning Areas, Shires, Powys and Wales	
Table 3	10
"Hidden Unemployment" ILO unemployment and JSA Claimant Count comparison, Wales	
Table 4	11-12
JSA claimant count, rates and ranks in Wales, Powys electoral divisions	

Contact details

*Geraint Morgan, Research Officer
Powys County Council
Statistical Research and Information
Unit,
County Hall
Llandrindod Wells, Powys
LD1 5LG
statistics@powys.gov.uk
01597 826442*

Unemployment Benefit Claimants Powys, December 2011

INTRODUCTION

This bulletin gives the unemployment benefit claimant statistics for December 2011 released by Office for National Statistics in mid January 2011.

The tables and graphs should be read in conjunction with the reference notes on page 2.

KEY POINTS:

- There were 1991 people (1360 male, 631 female) claiming unemployment benefit in December 2011 in Powys.
- Powys claimant unemployment rate in December 2011 was 2.5%, (3.5% among males, 1.6% among females). The Wales claimant unemployment rate was 4.0%.
- Male claimant unemployment rose by 23 and female claimant unemployment fell by 14 from November 2011 to December 2011.
- Llandrindod Wells Planning Area (PA) had the highest claimant unemployment rate (4.6%) among all 15 Powys PAs.
- Llanidloes PA had the lowest claimant unemployment rate (1.4%) among all 15 Powys PAs.
- Llandrindod East/Llandrindod West electoral division had the highest rate within Powys (10.2%), placed 8th worst within Wales. Newtown East and Welshpool Castle were also among the worst 100 areas.

REFERENCE NOTES (March 2009 onwards)

1. What is claimant unemployment?

This report summarises the Office for National Statistics (ONS) monthly counts of people in receipt of unemployment benefits, currently Job Seekers Allowance (JSA). Persons who are unemployed and looking for work but not in receipt of these benefits are not included. The counts are therefore an under-count of the total number of unemployed in Powys. To clarify this distinction these figures should always be referred to as Claimant Unemployment counts, rates, trends etc.

2. Trend Graphs, 1-16

Graph 1 shows the count of JSA claimants in Powys over the last five years and graphs 2 to 16 show JSA claimant rates in the 15 Powys Planning Areas (see also notes 4 and 7 below) These graphs display an annual cycle of seasonal fluctuation superimposed on an underlying trend. The trend is revealed by the moving average line, calculated from the mean average of the preceding 12 months.

3. Counts and rates this year, last month and last year, Table 1

Table 1 gives the monthly counts and rates of JSA claimants in Powys, the 15 Planning Areas, the three Shires and Wales. The sub-county counts are collated by PCC from the ONS electoral division counts of JSA claimants.

4. Bases used for rates calculations (Discontinuity)

From August 2010 the bases for the sub-county rates in Table 1 and Graphs 2-16 are derived from the ONS 2008 & 2009 Mid Year Estimates of the resident population aged 16-64, a change from the previous working age population.

5. Long-term and youth claimant unemployment, Table 2

Table 2 gives the counts of long term (duration of claimant unemployment exceeds 26 weeks) and young (aged under 25 years) JSA claimants, excluding non-computerised clerical claims. Rates of youth claimant unemployment are not given because the sub-county estimates of that age group are not sufficiently robust for this purpose. Rates of long term claimant unemployment among the working age populations can be provided, please contact us, see page 1, column 1.

6. ILO unemployment compared with claimant unemployment , Table 3

Table 3 compares the latest International Labour Organisation (ILO) estimate of unemployment for Wales with JSA claimant counts averaged over the same period. ILO unemployment statistics estimate the number of people out of work and currently looking for a job, including those who are unemployed but not eligible for JSA, and are derived from the ONS Annual Population Survey (APS), which includes the former Labour Force Survey (LFS). The difference between the ILO estimate which is the official national estimate of unemployment, and the JSA claimant count is most noticeable among women. ILO unemployment estimates for Powys are not given here as there is a six month time delay in their publication, but can be supplied on request, see page 1, column 1.

7. Area name change (March 2009 onwards)

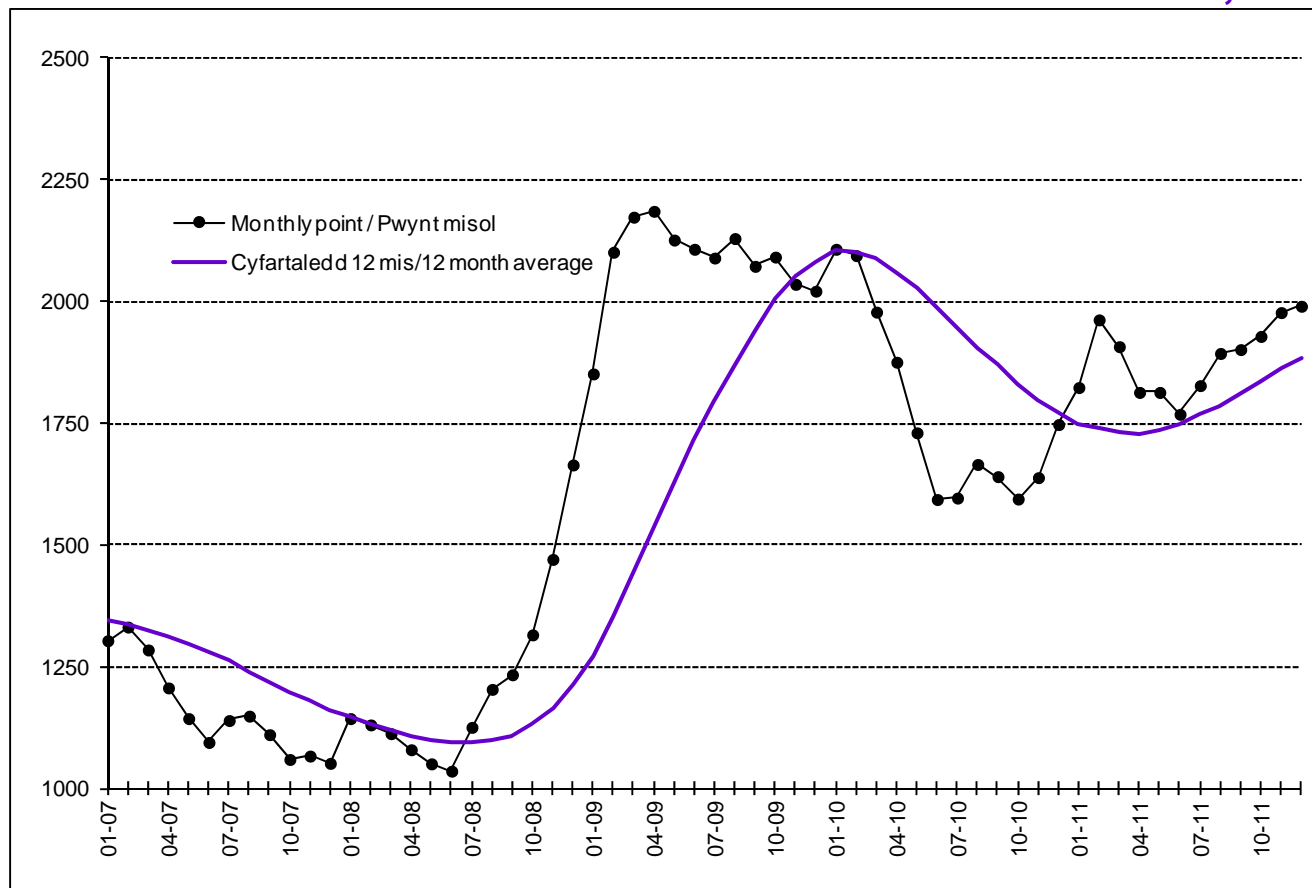
For consistency with current strategic terminology in Powys, the term Local Community Forum Area (LCFA) has been replaced with the term Planning Area (PA). Readers should note that the areas concerned have not changed.

8. Counts, Rates and Ranks in Wales, Table 4

Table 4 gives the JSA claimant counts and rates sorted by rate, highest first for Powys electoral divisions as published by ONS. The last column shows the rank among the 881 electoral divisions in Wales. These rates are based by ONS on mid 2007 estimates of working age populations.

TRENDS IN CLAIMANT UNEMPLOYMENT: January 2007 to December 2011

GRAPH 1 Count of Job Seekers Allowance Claimants, Powys



Source: Office for National Statistics © Crown Copyright
(See notes 1, 2)

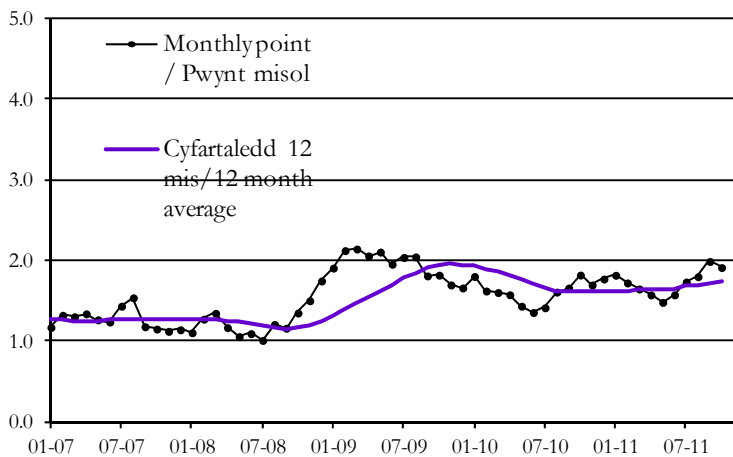
TRENDS IN CLAIMANT UNEMPLOYMENT: January 2007 to December 2011

Percentage of Working Age Population Claiming Job Seekers Allowance

GRAPH 2

Llanfyllin

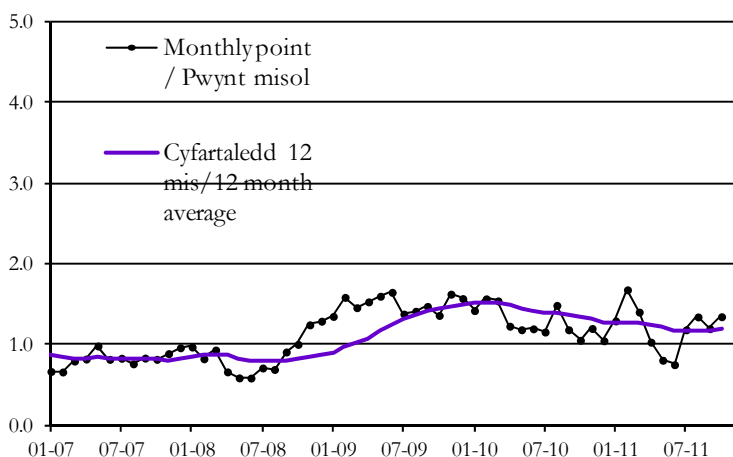
Planning Area



GRAPH 3

Llanfair Caereinion

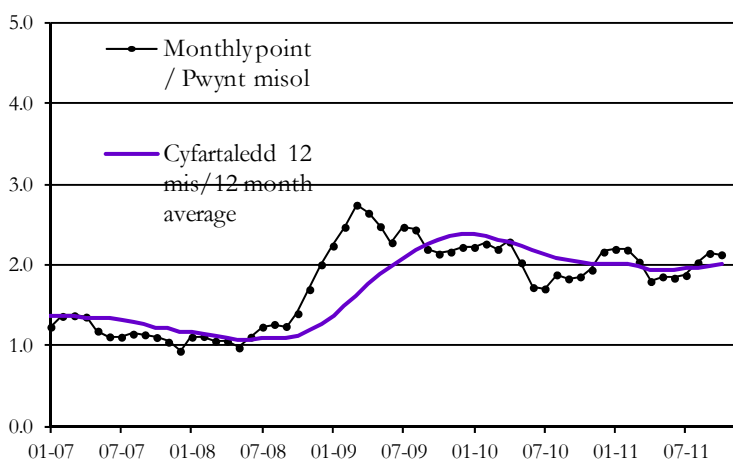
Planning Area



GRAPH 4

Welshpool

Planning Area

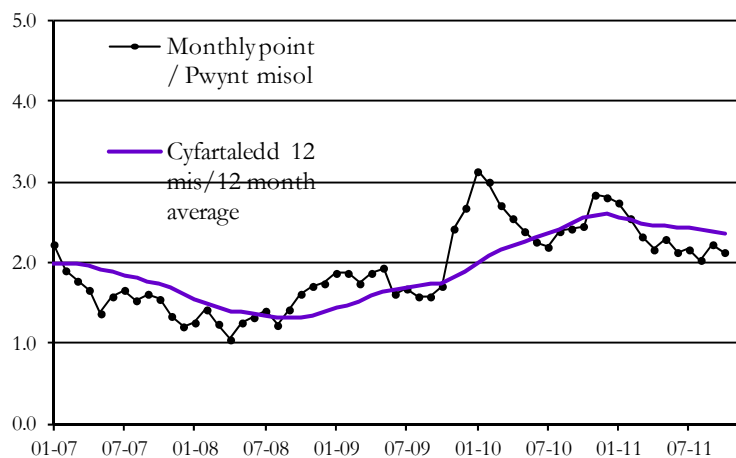


(See notes 1, 2, 4, and 7)

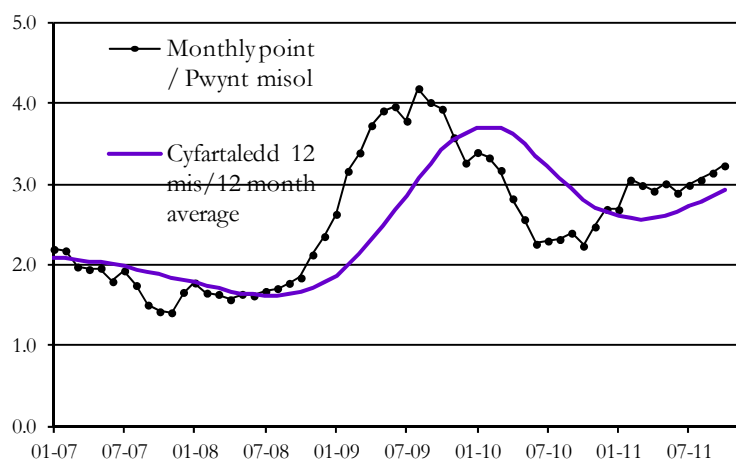
Source: Office for National Statistics © Crown Copyright

Percentage of Working Age Population Claiming Job Seekers Allowance

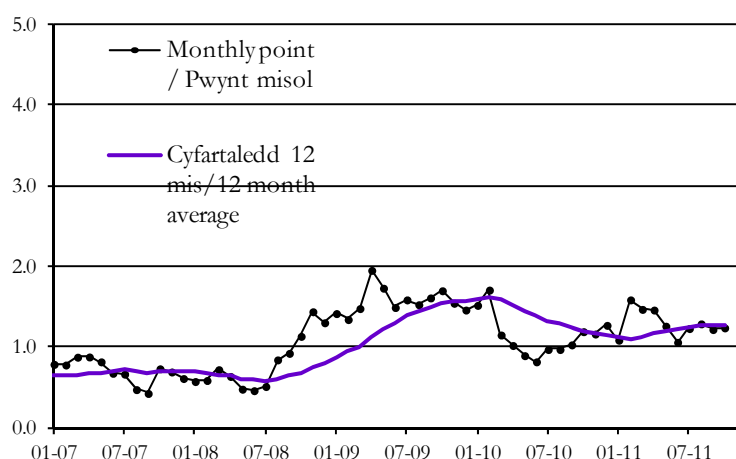
GRAPH 5
 Machynlleth
 Planning Area



GRAPH 6
 Newtown
 Planning Area



GRAPH 7
 Llanidloes
 Planning Area

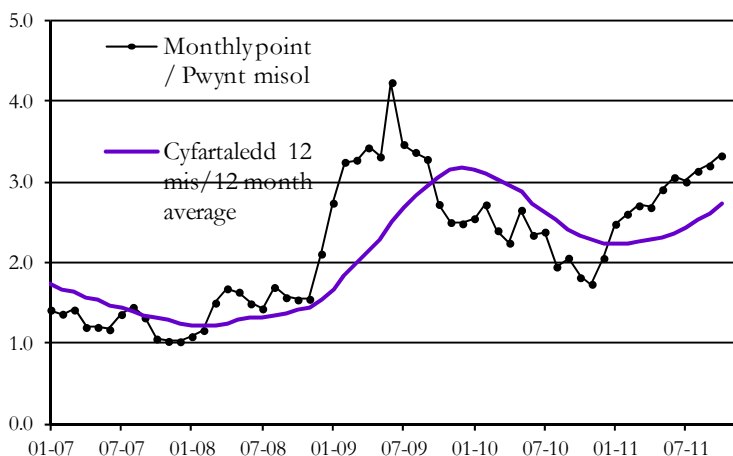


(See notes 1, 2, 4, and 7)

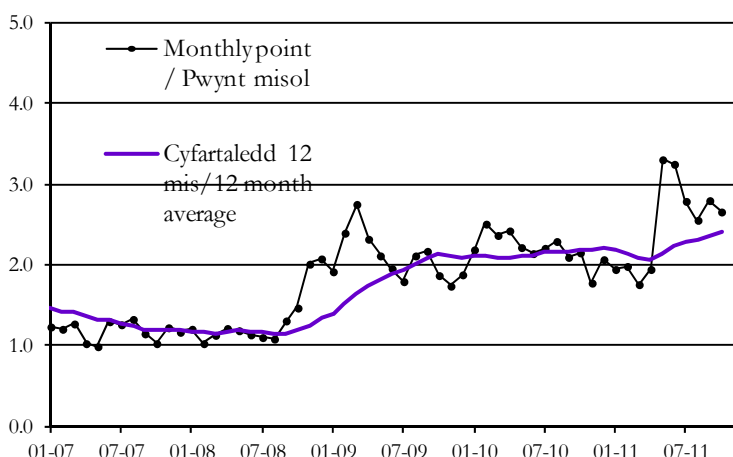
Source: Office for National Statistics © Crown Copyright

Percentage of Working Age Population Claiming Job Seekers Allowance

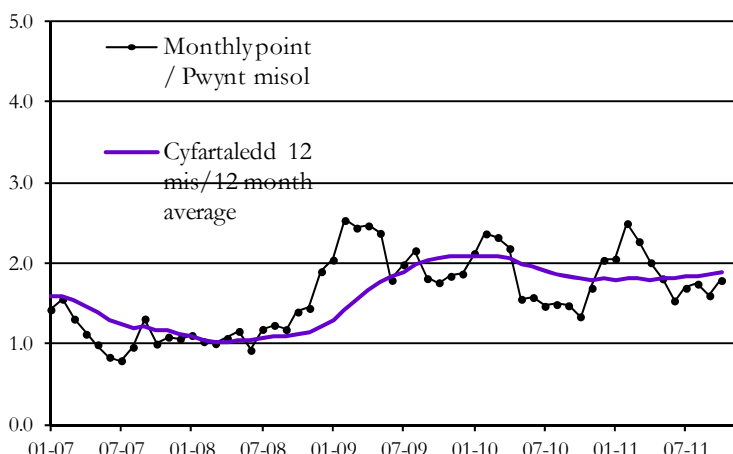
GRAPH 8
 Knighton
 Planning Area



GRAPH 9
 Presteigne
 Planning Area



GRAPH 10
 Rhayader
 Planning Area

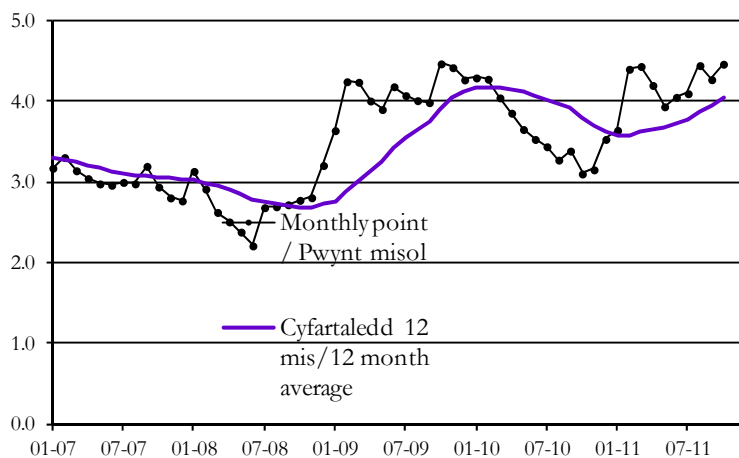


(See notes 1, 2, 4, and 7)

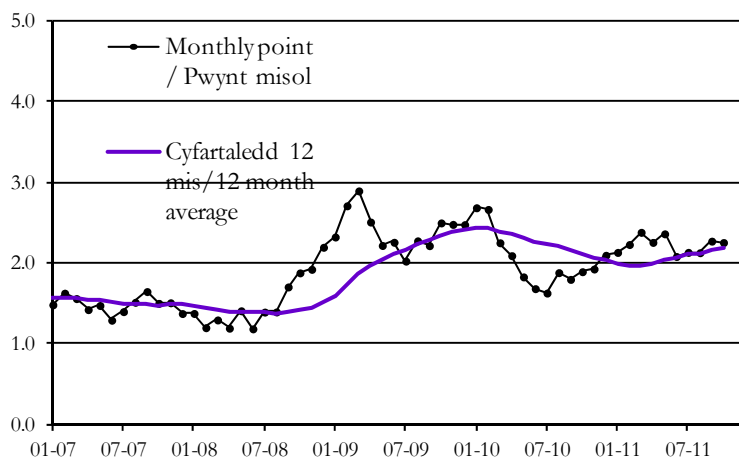
Source: Office for National Statistics © Crown Copyright

Percentage of Working Age Population Claiming Job Seekers Allowance

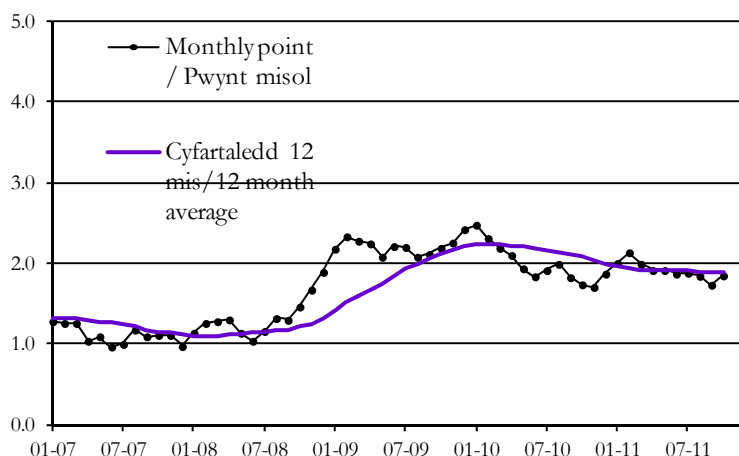
GRAPH 11
 Llandrindod Wells
 Planning Area



GRAPH 12
 Builth Wells
 Planning Area



GRAPH 13
 Brecon
 Planning Area

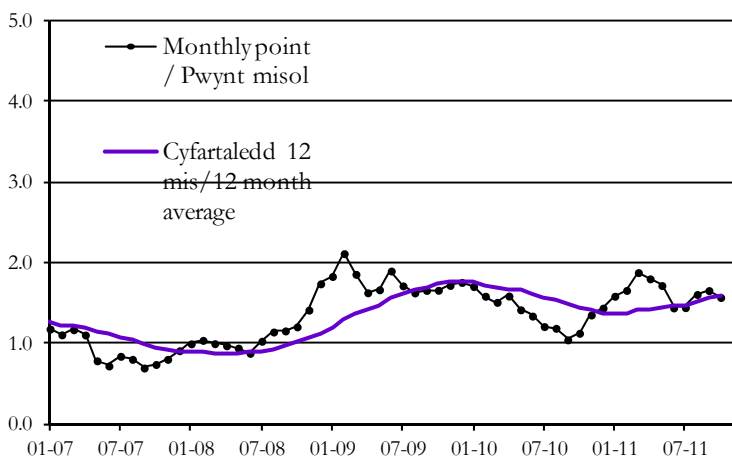


(See notes 1, 2, 4, and 7)

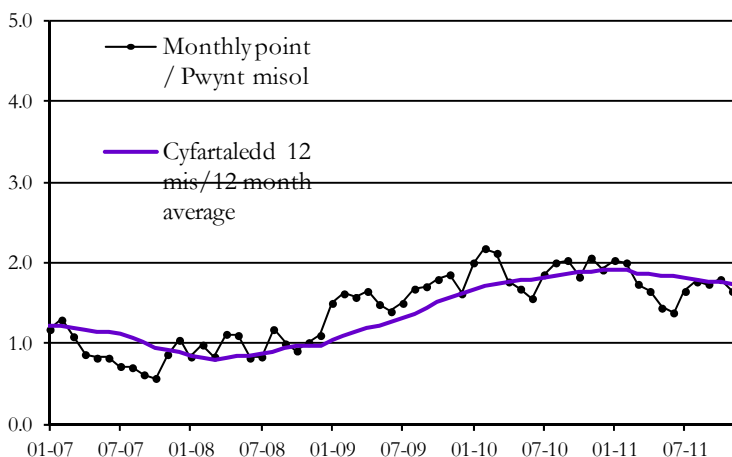
Source: Office for National Statistics © Crown Copyright

Percentage of Working Age Population Claiming Job Seekers Allowance

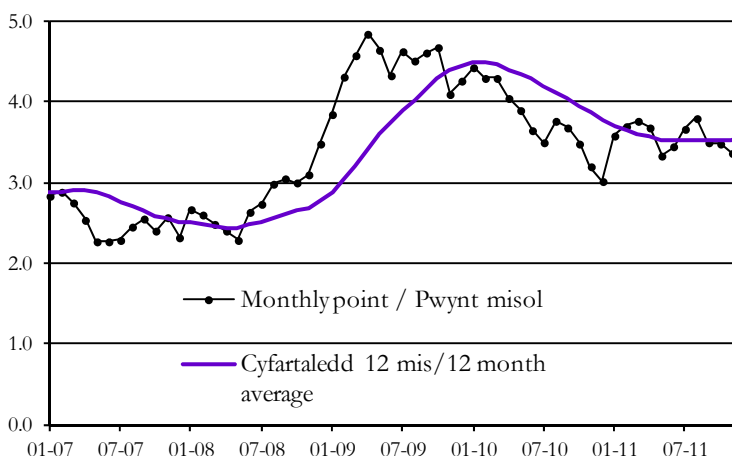
GRAPH 14
 Hay/Talgarth
 Planning Area



GRAPH 15
 Crickhowell
 Planning Area



GRAPH 16
 Ystradgynlais
 Planning Area



(See notes 1, 2, 4, and 7)

Source: Office for National Statistics © Crown Copyright

TABLE 1 UNEMPLOYMENT BENEFITS CLAIMANTS December 2011

Planning Area	COUNTS			% RATES		
	Male	Female	TOTAL	Male*	Female*	TOTAL*
Llanfyllin (revised)	73	33	106	2.7	1.3	2.0
Llanfair Caereinion	28	10	38	2.1	0.8	1.5
Welshpool	170	97	267	2.8	1.6	2.2
Machynlleth	56	21	77	3.7	1.3	2.5
Newtown	280	109	389	4.8	1.9	3.3
Llanidloes	36	11	47	2.1	0.6	1.4
Knighton	48	35	83	4.0	2.9	3.4
Presteigne	30	32	62	2.3	2.4	2.3
Rhayader	27	19	46	2.8	1.9	2.3
Llandrindod Wells	182	77	259	6.5	2.7	4.6
Builth Wells	78	27	106	3.5	1.3	2.4
Brecon	122	47	169	2.7	1.0	1.9
Hay on Wye/Talgarth	49	26	75	2.1	1.1	1.6
Crickhowell	41	12	54	2.5	0.7	1.6
Ystradgynlais	140	73	213	4.6	2.4	3.5
SHIRE						
Brecknockshire	409	178	588	3.2	1.4	2.3
Montgomeryshire	643	280	925	3.4	2.2	2.9
Radnorshire	309	170	479	4.3	2.3	3.3
COUNTY						
Powys	1360	631	1991	3.5	1.6	2.5
Powys - Last Month	1337	645	1982	3.4	1.7	2.5
Powys - Last Year	1193	555	1748	3.1	1.4	2.2
NATIONAL						
Wales	53,540	23,172	76,712	5.7	2.4	4.0
United Kingdom	1,056,607	512,242	1,568,849	5.2	2.5	3.9

Sources: Counts and county / national rates: Office for National Statistics. © Crown Copyright
Sub-county rates: estimated by Powys CC. Each rate based on resident population aged 16-64 of the area.

(see notes 1, 3, 4, and 7.)

* Please Note: Discontinuity due to change of base from August 2010, see note 4.

TABLE 2 Long Term & Youth Unemployment Benefits Claimants, Dec 2011

Planning Area	total claimant unemployed	long-term claimant unemployed	young claimant unemployed	young long term claimant unemployed
Llanfyllin (revised)	106	27	35	-
Llanfair Caereinion	38	15	17	-
Welshpool	267	80	95	-
Machynlleth	77	20	25	-
Newtown	389	118	120	-
Llanidloes	47	10	18	-
Knighton	83	37	29	-
Presteigne	62	21	11	-
Rhayader	46	9	23	-
Llandrindod Wells	259	106	95	-
Builth Wells	106	33	37	-
Brecon	169	45	70	-
Hay on Wye/Talgarth	75	30	15	-
Crickhowell	54	15	10	-
Ystradgynlais	213	75	80	-
SHIRE				
Brecknockshire	588	190	205	-
Montgomeryshire	925	270	310	-
Radnorshire	479	180	165	-
COUNTY				
Powys	1991	650	680	140
Powys - Last Month	1978	640	670	130
Powys -Last Year	1748	395	560	45
NATIONAL				
Wales	76,712	29,990	26,345	7,340
United Kingdom	1,568,849	608,395	452,950	124,055

Source: Office for National Statistics © Crown Copyright (see notes 1, 5, and 7)

TABLE 3 “Hidden Unemployment” Comparison of Labour Force Survey and Claimant Unemployment, Wales, September 2011– November 2011

	COUNTS			% RATES		
	Male	Female	TOTAL	Male	Female	TOTAL
LFS Unemployment (ILO)	81,551	38,387	119,937	10.8	5.9	8.5
Av. Claimant Unemployment	52,477	24,019	76,496	5.6	2.5	4.0

Source: Office for National Statistics © Crown Copyright (see notes 1 and 6)

**TABLE 4 POWYS CLAIMANT UNEMPLOYMENT BY ELECTORAL DIVISION
 December 2011**

Electoral Division	Total claimants		Rank within Wales*
	number	rate	
Llandrindod East/Llandrindod West	65	10.2	8
Newtown East	91	7.1	73
Welshpool Castle	63	6.4	99
Llandrindod South	68	6.3	107
Newtown Central	109	5.6	148
Newtown South	59	5.3	172
Ystradgynlais	84	5.2	183
Disserth and Trecoed	32	5.0	199
Llandrindod North	53	4.9	210
Cwm-twrch	44	3.8	338
Knighton	67	3.8	338
St. John	67	3.6	367
Newtown Llanllwchaiarn West	36	3.4	396
Talgarth	33	3.4	396
Presteigne	48	3.3	413
Machynlleth	40	3.1	447
Rhayader	34	3.1	447
Llanfyllin	28	2.9	481
Aber-craf	22	2.7	514
Beguildy	24	2.7	514
Llanelwedd	19	2.7	514
Llanyre	17	2.7	514
Welshpool Gungrog	47	2.7	514
Ynyscedwyn	32	2.7	514
Llanwrtyd Wells	29	2.6	539
Newtown Llanllwchaiarn North	35	2.6	539
Hay	22	2.5	564
Llanrhaeadr-ym-Mochnant	26	2.5	564
Builth	36	2.4	581
St. David Within	24	2.4	581
Tawe-Uchaf	31	2.4	581
Glantwymyn	28	2.3	599
Llangattock	13	2.3	599
Llandrinio	29	2.2	613
St. Mary	39	2.2	613
Llanrhaeadr-ym-Mochnant/Llansilin	22	2.1	628
Llanbadarn Fawr	13	2.0	648
Welshpool Llanerchydol	25	2.0	648

TABLE 4 Continued: POWYS CLAIMANT UNEMPLOYMENT BY ELECTORAL DIVISION December 2011

Electoral Division	Total claimants		Rank within Wales*
	number	rate	
Berriew	16	1.9	665
Llanidloes	29	1.9	665
Trewern	15	1.8	686
Churchstoke	16	1.7	718
Llandysilio	18	1.7	718
Nantmel	15	1.7	718
Bronllys	13	1.6	739
Crickhowell	27	1.6	739
Llandinam	14	1.6	739
Llanfair Caereinion	18	1.6	739
Llangunllo	11	1.6	739
Banwy	9	1.5	763
Llanbrynmair	9	1.5	763
Dolforwyn	17	1.4	790
Forden	12	1.4	790
Llanfihangel	9	1.4	790
Llansantffraid	17	1.4	790
Bwlch	7	1.3	809
Caersws	18	1.3	809
Guilsfield	16	1.2	823
Llangynidr	7	1.2	823
Maescar/Llywel	14	1.2	823
Meifod	9	1.2	823
Montgomery	10	1.2	823
Rhiwcynon	16	1.2	823
Old Radnor	11	1.1	840
Talybont-on-Usk	13	1.1	840
Gwernyfed	10	1.0	851
Llanafanfawr	9	1.0	851
Llangors	7	1.0	851
Kerry	10	0.8	865
Blaen Hafren	9	0.7	871
Felin-fach	3	0.4	877
Glasbury	#	#	880
Yscir	#	#	880

Notes: * Welsh ranking is out of 881 Electoral Divisions

These figures are suppressed as value is 1 or 2

Rates are calculated by ONS based on the resident population aged 16-64 of the area.

Source: Office for National Statistics © Crown Copyright (see notes 1 and 8)